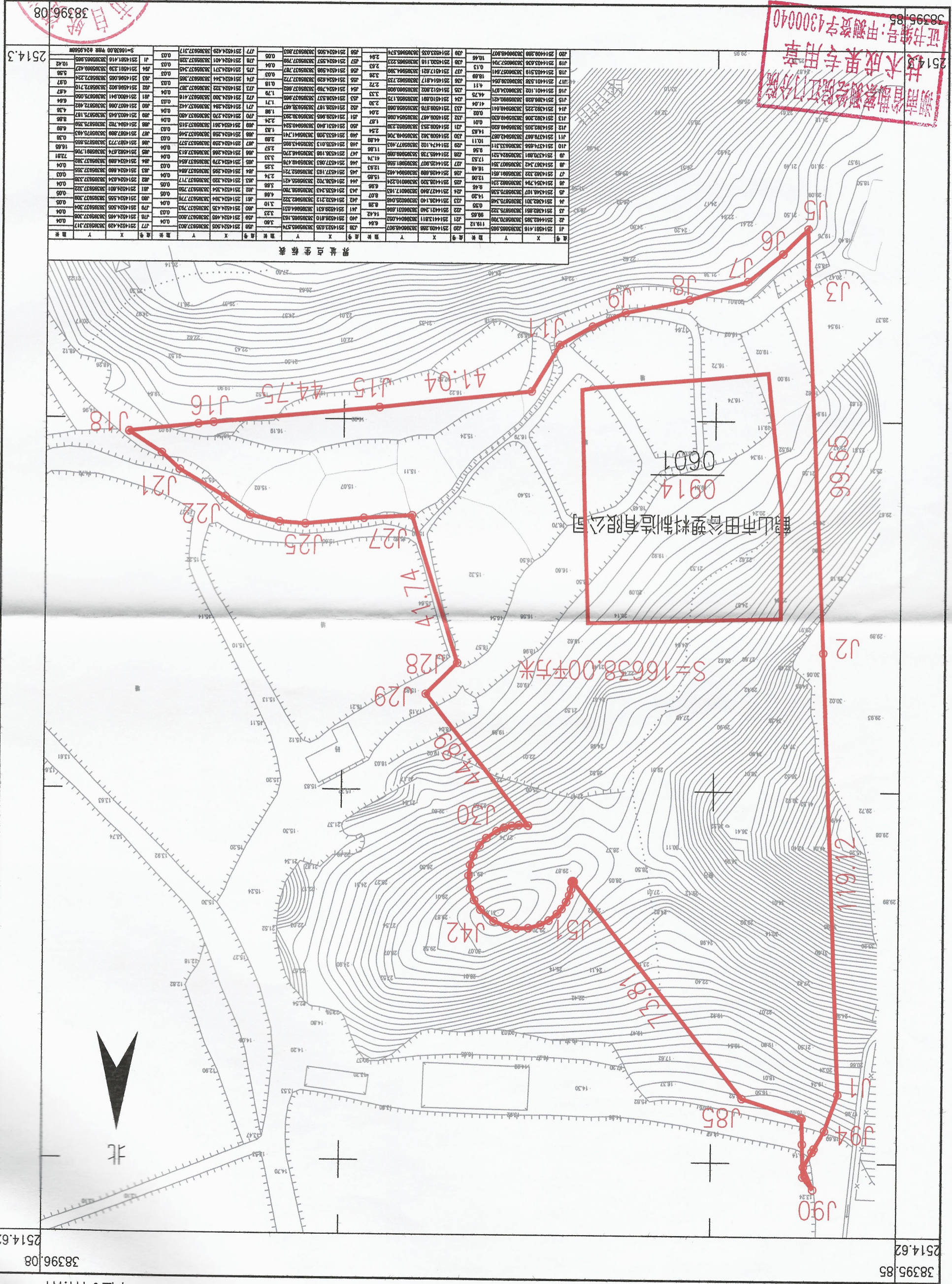


2020年2月数字化制图
2000国家大地坐标系：中央子午线114度
1985国家高程基准，等高距为1米
2007年模式

1:1000



湖南省勘测设计院江院分院
技术成果专用章
证书编号：甲测资字4300040
38395.85



| 点号 | X | Y | 点号 | X | Y | 点号 | X | Y | 点号 | X | Y |
|-----|------------|-----------|-----|------------|-----------|-----|------------|-----------|-----|------------|-----------|
| J1 | 251401.116 | 38395.855 | J11 | 251402.102 | 38395.855 | J21 | 251403.102 | 38395.855 | J31 | 251404.102 | 38395.855 |
| J2 | 251402.102 | 38395.855 | J12 | 251403.102 | 38395.855 | J22 | 251404.102 | 38395.855 | J32 | 251405.102 | 38395.855 |
| J3 | 251403.102 | 38395.855 | J13 | 251404.102 | 38395.855 | J23 | 251405.102 | 38395.855 | J33 | 251406.102 | 38395.855 |
| J4 | 251404.102 | 38395.855 | J14 | 251405.102 | 38395.855 | J24 | 251406.102 | 38395.855 | J34 | 251407.102 | 38395.855 |
| J5 | 251405.102 | 38395.855 | J15 | 251406.102 | 38395.855 | J25 | 251407.102 | 38395.855 | J35 | 251408.102 | 38395.855 |
| J6 | 251406.102 | 38395.855 | J16 | 251407.102 | 38395.855 | J26 | 251408.102 | 38395.855 | J36 | 251409.102 | 38395.855 |
| J7 | 251407.102 | 38395.855 | J17 | 251408.102 | 38395.855 | J27 | 251409.102 | 38395.855 | J37 | 251410.102 | 38395.855 |
| J8 | 251408.102 | 38395.855 | J18 | 251409.102 | 38395.855 | J28 | 251410.102 | 38395.855 | J38 | 251411.102 | 38395.855 |
| J9 | 251409.102 | 38395.855 | J19 | 251410.102 | 38395.855 | J29 | 251411.102 | 38395.855 | J39 | 251412.102 | 38395.855 |
| J10 | 251410.102 | 38395.855 | J20 | 251411.102 | 38395.855 | J30 | 251412.102 | 38395.855 | | | |

鹤山市2020年度第五批城镇建设用地图测定界图(Y308)
鹤山市雅理镇黄洞村委会

单位：m.m²

38395.85 2514.62 38396.08 2514.62

2514.3

38396.08