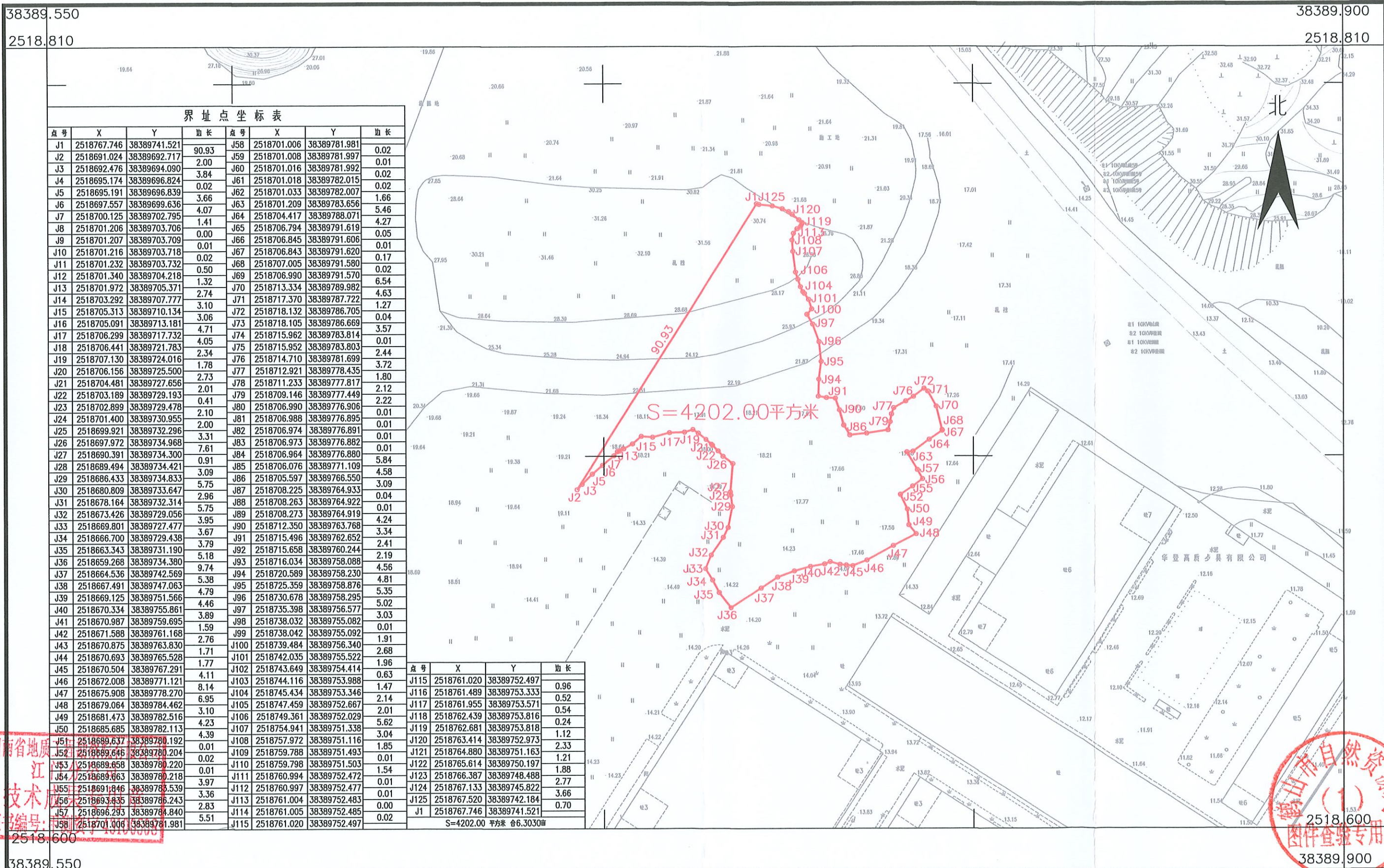


鹤山市沙坪街莺朗股份经济合作联社征收土地红线图

单位: m.m²



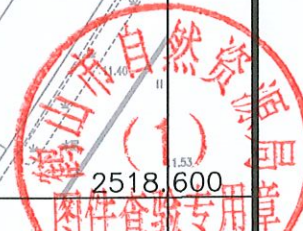
界址点坐标表

点号	X	Y	边长	点号	X	Y	边长
J1	2518767.746	38389741.521	90.93	J58	2518701.006	38389781.981	0.02
J2	2518691.024	38389692.717	2.00	J59	2518701.008	38389781.997	0.01
J3	2518692.476	38389694.090	3.84	J60	2518701.016	38389781.992	0.02
J4	2518695.174	38389696.824	0.02	J61	2518701.018	38389782.015	0.02
J5	2518695.191	38389696.839	3.66	J62	2518701.033	38389782.007	1.66
J6	2518697.557	38389699.636	4.07	J63	2518701.209	38389783.656	5.46
J7	2518700.125	38389702.795	1.41	J64	2518704.417	38389788.071	4.27
J8	2518701.206	38389703.706	0.00	J65	2518706.794	38389791.619	0.05
J9	2518701.207	38389703.709	0.01	J66	2518706.845	38389791.606	0.01
J10	2518701.216	38389703.718	0.02	J67	2518706.843	38389791.620	0.17
J11	2518701.232	38389703.732	0.50	J68	2518707.005	38389791.580	0.02
J12	2518701.340	38389704.218	1.32	J69	2518706.990	38389791.570	6.54
J13	2518701.972	38389705.371	2.74	J70	2518713.334	38389789.982	4.63
J14	2518703.292	38389707.777	3.10	J71	2518717.370	38389787.722	1.27
J15	2518705.313	38389710.134	3.06	J72	2518718.132	38389786.705	0.04
J16	2518705.091	38389713.181	4.71	J73	2518718.105	38389786.669	3.57
J17	2518706.299	38389717.732	4.05	J74	2518715.962	38389783.814	0.01
J18	2518706.441	38389721.783	2.34	J75	2518715.952	38389783.803	2.44
J19	2518707.130	38389724.016	1.78	J76	2518714.710	38389781.699	3.72
J20	2518706.156	38389725.500	2.73	J77	2518712.921	38389778.435	1.80
J21	2518704.481	38389727.656	2.01	J78	2518711.233	38389777.817	2.12
J22	2518703.189	38389729.193	0.41	J79	2518709.146	38389777.449	2.22
J23	2518702.899	38389729.478	2.10	J80	2518706.990	38389776.906	0.01
J24	2518701.400	38389730.955	2.00	J81	2518706.988	38389776.895	0.01
J25	2518699.921	38389732.296	3.31	J82	2518706.974	38389776.891	0.01
J26	2518697.972	38389734.968	7.61	J83	2518706.973	38389776.882	0.01
J27	2518690.391	38389734.300	0.91	J84	2518706.964	38389776.880	5.84
J28	2518689.494	38389734.421	3.09	J85	2518706.076	38389771.109	4.58
J29	2518686.433	38389734.833	5.75	J86	2518705.597	38389766.550	3.09
J30	2518680.809	38389733.647	2.96	J87	2518708.225	38389764.933	0.04
J31	2518678.164	38389732.314	5.75	J88	2518708.263	38389764.922	0.01
J32	2518673.426	38389729.056	3.95	J89	2518708.273	38389764.919	4.24
J33	2518669.801	38389727.477	3.67	J90	2518712.350	38389763.768	3.34
J34	2518666.700	38389729.438	3.79	J91	2518715.496	38389762.652	2.41
J35	2518663.343	38389731.190	5.18	J92	2518715.658	38389760.244	2.19
J36	2518659.268	38389734.380	9.74	J93	2518716.034	38389758.088	4.56
J37	2518664.536	38389742.569	5.38	J94	2518720.589	38389758.230	4.81
J38	2518667.491	38389747.063	4.79	J95	2518725.359	38389758.876	5.35
J39	2518669.125	38389751.566	4.46	J96	2518730.678	38389758.295	5.02
J40	2518670.334	38389755.861	3.89	J97	2518735.398	38389756.577	3.03
J41	2518670.987	38389759.695	1.59	J98	2518738.032	38389755.082	0.01
J42	2518671.588	38389761.168	2.76	J99	2518738.042	38389755.092	1.91
J43	2518670.875	38389763.830	1.71	J100	2518739.484	38389756.340	2.68
J44	2518670.693	38389765.528	1.77	J101	2518742.035	38389755.522	1.96
J45	2518670.504	38389767.291	4.11	J102	2518743.649	38389754.414	0.63
J46	2518672.008	38389771.121	8.14	J103	2518744.116	38389753.988	1.47
J47	2518675.908	38389778.270	6.95	J104	2518745.434	38389753.346	2.14
J48	2518679.064	38389784.462	3.10	J105	2518747.459	38389752.667	2.01
J49	2518681.473	38389782.516	4.23	J106	2518749.361	38389752.029	5.62
J50	2518685.685	38389782.113	4.39	J107	2518754.941	38389751.338	3.04
J51	2518689.637	38389780.192	0.01	J108	2518757.972	38389751.116	1.85
J52	2518689.646	38389780.204	0.02	J109	2518759.788	38389751.493	0.01
J53	2518689.658	38389780.220	0.01	J110	2518759.798	38389751.503	1.54
J54	2518689.663	38389780.218	3.97	J111	2518760.994	38389752.472	0.01
J55	2518691.846	38389783.539	3.36	J112	2518760.997	38389752.477	0.01
J56	2518693.835	38389786.243	2.83	J113	2518761.004	38389752.483	0.00
J57	2518696.293	38389784.840	5.51	J114	2518761.005	38389752.485	0.02
J58	2518701.006	38389781.981		J115	2518761.020	38389752.497	0.96

点号	X	Y	边长
J115	2518761.020	38389752.497	0.96
J116	2518761.489	38389753.333	0.52
J117	2518761.955	38389753.571	0.54
J118	2518762.439	38389753.816	0.24
J119	2518762.681	38389753.818	1.12
J120	2518763.414	38389752.973	2.33
J121	2518764.880	38389751.163	1.21
J122	2518765.614	38389750.197	1.88
J123	2518766.387	38389748.488	2.77
J124	2518767.133	38389745.822	3.66
J125	2518767.520	38389742.184	0.70
J1	2518767.746	38389741.521	

S=4202.00 平方米 合6.3030亩

湖南省地质工程勘察院有限公司 江门分公司



2024年3月数字化制图
2000国家大地坐标系: 中央子午线114度
1985国家高程基准, 等高距为1米
2007年版式

1:1000

绘图员: 李彩花
审核员: 廖军华