

鹤山市2023年度第四十九批次城镇建设用地上征收土地红线图(1)

单位: m.m²

8396.25

8397.40

2511.90

2511.90

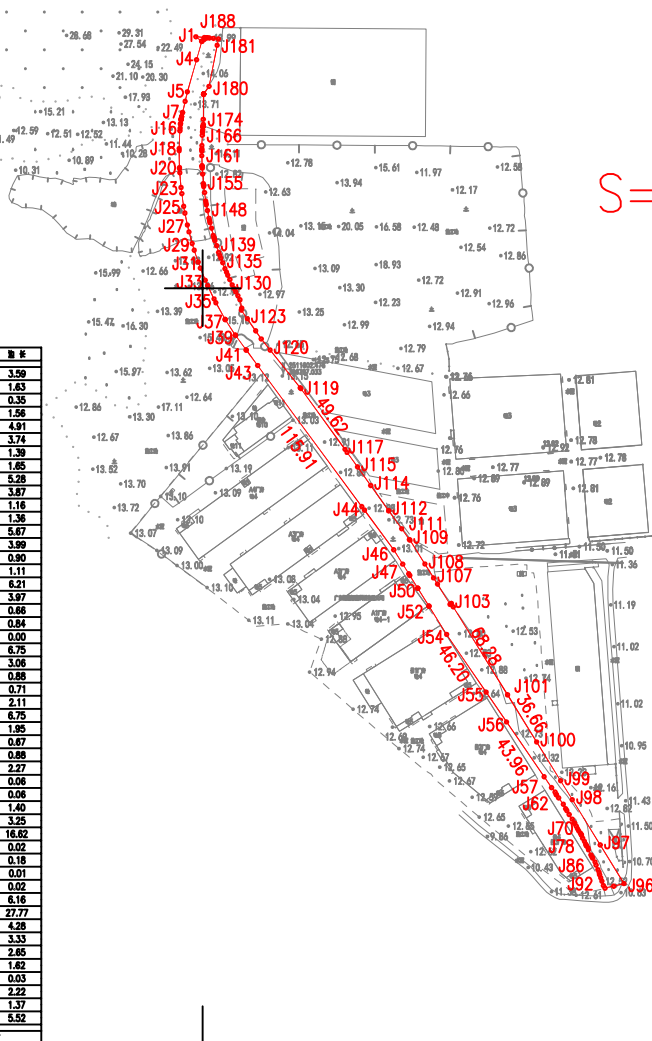
界址点坐标表

序号	X	Y	距离	序号	X	Y	距离
J1	2511816.240	38396745.438	4.85	J70	2511294.217	38396997.022	1.86
J2	2511813.292	38396748.278	0.22	J71	2511292.530	38396997.785	1.49
J3	2511813.156	38396748.456	12.60	J72	2511291.249	38396998.570	2.06
J4	2511801.040	38396745.986	22.09	J73	2511289.551	38396999.730	1.19
J5	2511779.810	38396739.900	8.43	J74	2511286.536	38397000.304	0.30
J6	2511773.552	38396738.440	7.85	J75	2511288.278	38397000.510	2.25
J7	2511768.101	38396736.895	0.02	J76	2511286.180	38397001.280	2.42
J8	2511766.084	38396734.891	0.01	J77	2511284.041	38397002.442	2.02
J9	2511763.448	38396736.073	2.71	J78	2511282.189	38397003.281	0.74
J10	2511763.434	38396736.070	0.01	J79	2511281.540	38397003.622	1.28
J11	2511762.204	38396735.782	0.75	J80	2511281.209	38397003.798	1.71
J12	2511761.464	38396735.694	0.01	J81	2511278.799	38397004.785	1.30
J13	2511761.453	38396735.892	2.55	J82	2511278.550	38397005.142	3.75
J14	2511768.920	38396735.383	0.71	J83	2511275.167	38397005.785	1.38
J15	2511768.211	38396735.321	0.71	J84	2511273.922	38397007.381	1.03
J16	2511755.672	38396735.061	2.55	J85	2511273.018	38397007.858	2.98
J17	2511754.083	38396734.943	11.78	J86	2511270.472	38397008.407	2.25
J18	2511742.336	38396734.464	1.43	J87	2511268.305	38397010.178	3.18
J19	2511740.903	38396734.456	11.18	J88	2511265.389	38397011.332	1.06
J20	2511729.728	38396734.885	0.74	J89	2511263.695	38397012.105	1.74
J21	2511728.987	38396734.897	2.78	J90	2511262.002	38397012.488	2.25
J22	2511728.237	38396734.899	0.74	J91	2511259.894	38397013.255	1.06
J23	2511716.508	38396735.892	4.04	J92	2511257.787	38397014.025	3.04
J24	2511712.503	38396736.208	8.50	J93	2511254.889	38397015.004	1.96
J25	2511704.087	38396731.638	0.94	J94	2511253.330	38397016.038	5.86
J26	2511698.695	38396734.232	4.48	J95	2511254.502	38397021.781	7.11
J27	2511691.750	38396730.857	8.09	J96	2511254.237	38397028.851	30.16
J28	2511687.532	38396740.982	4.85	J97	2511281.788	38397012.885	14.02
J29	2511679.519	38396743.052	4.83	J98	2511311.711	38396994.419	37.72
J30	2511675.083	38396744.388	8.16	J99	2511324.238	38396985.880	30.14
J31	2511667.353	38396741.415	3.33	J100	2511325.887	38396978.882	36.86
J32	2511663.209	38396748.502	4.41	J101	2511381.087	38396951.828	68.28
J33	2511655.282	38396751.731	3.88	J102	2511438.198	38396915.750	2.54
J34	2511651.621	38396753.288	9.78	J104	2511441.355	38396914.419	0.00
J35	2511642.824	38396757.517	2.75	J105	2511441.358	38396914.417	0.84
J36	2511640.355	38396756.732	12.51	J105	2511440.861	38396913.622	15.76
J37	2511629.429	38396744.830	0.41	J106	2511454.227	38396905.278	18.82
J38	2511629.075	38396765.044	11.88	J107	2511458.384	38396902.678	4.91
J39	2511619.081	38396771.473	0.48	J108	2511487.586	38396898.938	18.82
J40	2511618.687	38396771.745	0.88	J109	2511483.384	38396887.077	0.48
J41	2511609.122	38396778.799	0.12	J110	2511483.688	38396886.688	8.79
J42	2511609.028	38396778.670	12.70	J111	2511480.828	38396881.580	14.72
J43	2511598.895	38396786.418	115.91	J112	2511502.812	38396873.038	0.04
J44	2511595.557	38396855.257	2.94	J113	2511502.842	38396873.013	20.50
J45	2511593.192	38396857.003	32.58	J114	2511519.534	38396861.110	15.05
J46	2511478.982	38396876.353	11.17	J115	2511531.790	38396852.371	11.80
J47	2511487.504	38396882.270	7.50	J116	2511541.384	38396848.522	2.45
J48	2511481.142	38396896.242	1.31	J117	2511543.377	38396844.083	49.82
J49	2511480.028	38396896.837	9.98	J118	2511565.582	38396814.940	0.73
J50	2511481.596	38396892.219	0.04	J119	2511584.113	38396814.483	31.89
J51	2511451.535	38396892.238	13.85	J120	2511609.033	38396794.580	6.44
J52	2511439.702	38396890.627	0.03	J121	2511616.420	38396788.687	9.70
J53	2511439.880	38396899.841	22.06	J122	2511621.721	38396785.030	7.06
J54	2511420.988	38396911.323	48.40	J123	2511628.783	38396778.520	7.06
J55	2511382.855	38396937.437	23.89	J124	2511635.512	38396778.519	1.40
J56	2511383.147	38396950.941	43.96	J125	2511636.872	38396775.838	5.82
J57	2511328.883	38396975.790	8.74	J126	2511642.371	38396774.678	3.02
J58	2511319.676	38396980.728	1.83	J127	2511644.983	38396773.310	2.34
J59	2511316.703	38396983.081	0.14	J128	2511647.822	38396771.838	2.74
J60	2511315.040	38396983.818	2.52	J129	2511652.161	38396769.552	3.89
J61	2511314.920	38396983.898	3.35	J130	2511652.161	38396769.552	2.12
J62	2511312.884	38396985.388	5.28	J131	2511655.710	38396767.951	2.46
J63	2511308.639	38396988.485	1.40	J132	2511658.608	38396766.558	2.12
J64	2511305.671	38396990.043	2.98	J133	2511660.570	38396765.759	4.21
J65	2511304.396	38396990.819	3.55	J134	2511662.906	38396764.750	3.41
J66	2511301.852	38396992.388	2.88	J135	2511666.738	38396763.247	1.87
J67	2511298.884	38396994.309	0.34	J136	2511668.888	38396761.958	2.19
J68	2511296.337	38396995.860	2.08	J137	2511671.688	38396761.361	4.55
J69	2511296.037	38396996.022	2.08	J138	2511673.715	38396760.578	2.19
J70	2511294.217	38396997.022	2.08	J139	2511678.049	38396759.205	4.55

界址点坐标表

序号	X	Y	距离
J139	2511678.049	38396759.205	3.59
J140	2511681.447	38396758.073	1.83
J141	2511683.024	38396757.630	0.35
J142	2511683.357	38396757.525	0.75
J143	2511684.846	38396757.052	4.91
J144	2511689.803	38396755.847	3.74
J145	2511683.212	38396754.888	1.39
J146	2511684.570	38396754.588	5.87
J147	2511698.189	38396754.183	5.28
J148	2511701.358	38396753.187	3.18
J149	2511705.150	38396752.404	1.18
J150	2511706.289	38396752.239	1.38
J151	2511707.439	38396751.882	5.87
J152	2511713.285	38396751.239	3.99
J153	2511717.216	38396750.593	0.80
J154	2511718.114	38396750.593	0.11
J155	2511719.217	38396750.455	6.21
J156	2511725.408	38396750.004	3.97
J157	2511729.368	38396749.881	0.00
J158	2511730.030	38396749.688	0.88
J159	2511730.889	38396749.407	0.00
J160	2511730.889	38396749.407	6.75
J161	2511737.819	38396748.429	3.06
J162	2511740.878	38396748.452	0.88
J163	2511741.853	38396748.134	0.71
J164	2511742.283	38396748.463	2.11
J165	2511744.389	38396748.478	0.75
J166	2511751.115	38396748.756	9.85
J167	2511753.080	38396748.903	0.87
J168	2511753.733	38396748.331	0.88
J169	2511754.825	38396750.020	2.27
J170	2511758.873	38396750.191	0.06
J171	2511758.889	38396750.251	0.58
J172	2511758.927	38396750.257	1.40
J173	2511758.921	38396750.400	3.25
J174	2511761.874	38396750.330	16.62
J175	2511778.181	38396750.580	0.02
J176	2511778.215	38396750.580	0.18
J177	2511778.359	38396750.682	0.02
J178	2511778.385	38396750.682	6.18
J179	2511778.383	38396750.896	3.33
J180	2511818.240	38396754.230	27.77
J181	2511816.675	38396759.570	4.28
J182	2511814.876	38396760.400	2.65
J183	2511815.180	38396757.000	1.62
J184	2511815.423	38396754.441	0.03
J185	2511815.571	38396752.526	2.22
J186	2511815.574	38396752.187	1.87
J187	2511814.373	38396750.928	1.87
J188	2511815.744	38396750.940	5.52
J189	2511816.249	38396745.438	4.55

S=7881.00 附率 1:1.82158



S=7881.00平方米

2511.15

2511.15

8396.25

8397.40

鹤山市城乡规划局有限公司

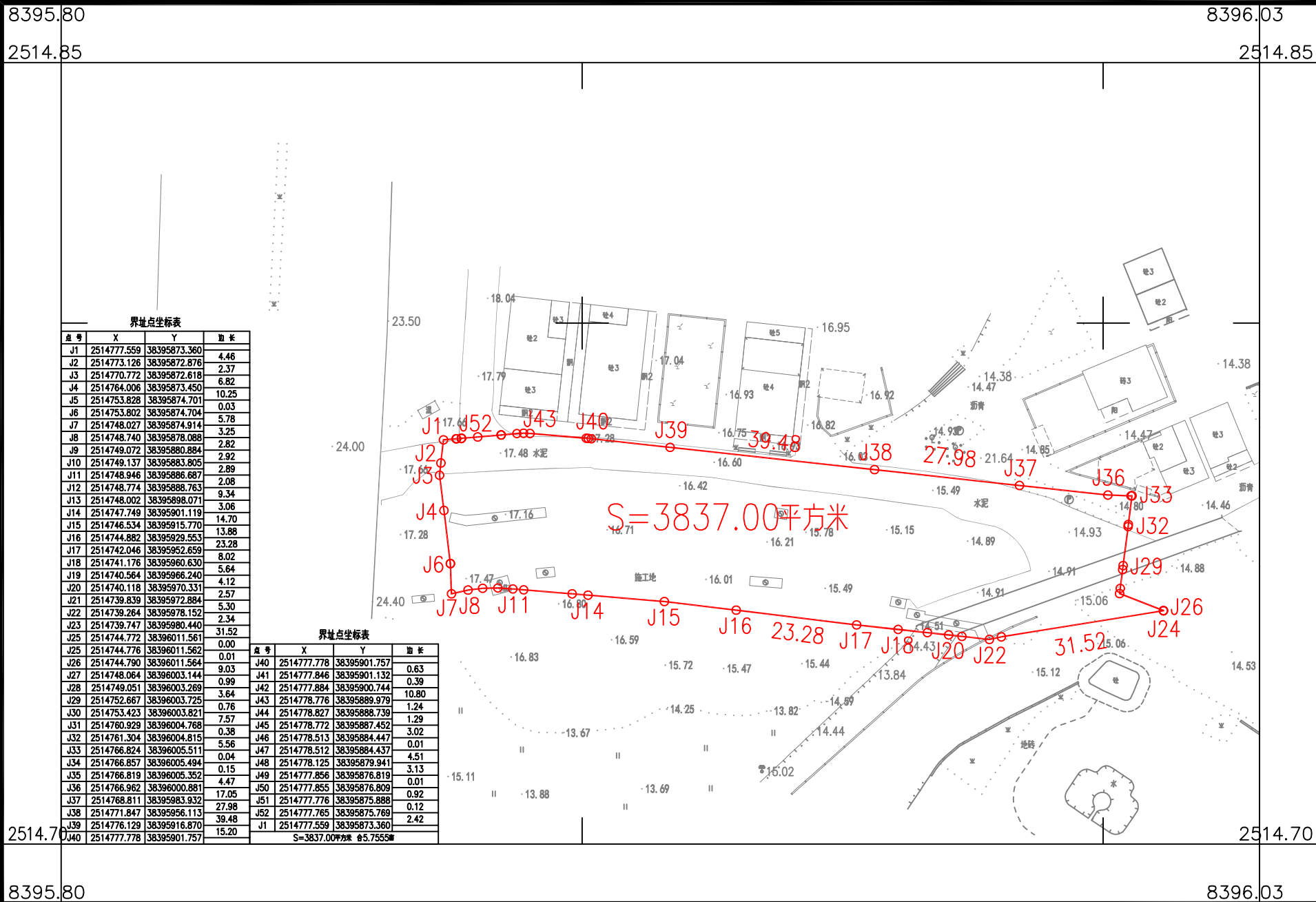
2024年07月数字化制图
2000国家大地坐标系: 中央子午线 114度
1985国家高程基准, 等高距为 1米
2007年版式

1:5000

绘图员: 张锦雯
检查员: 段群群
审核员: 谭锦峰

鹤山市2023年度第四十九批次城镇建设用地征收土地红线图(2)

单位: m.m²



界址点坐标表

点号	X	Y	边长
J1	2514777.559	38395873.360	4.46
J2	2514773.126	38395872.876	2.37
J3	2514770.772	38395872.618	6.82
J4	2514764.006	38395873.450	10.25
J5	2514753.828	38395874.701	0.03
J6	2514753.802	38395874.704	5.78
J7	2514748.027	38395874.914	3.25
J8	2514748.740	38395878.088	2.82
J9	2514749.072	38395880.884	2.92
J10	2514749.137	38395883.805	2.89
J11	2514748.946	38395886.687	2.08
J12	2514748.774	38395888.763	9.34
J13	2514748.002	38395898.071	3.06
J14	2514747.749	38395901.119	14.70
J15	2514746.534	38395915.770	13.88
J16	2514744.882	38395929.553	23.28
J17	2514742.046	38395952.659	8.02
J18	2514741.176	38395960.630	5.64
J19	2514740.564	38395966.240	4.12
J20	2514740.118	38395970.331	2.57
J21	2514739.839	38395972.884	5.30
J22	2514739.264	38395978.152	2.34
J23	2514739.747	38395980.440	31.52
J25	2514744.772	38396011.561	0.00
J25	2514744.776	38396011.562	0.01
J26	2514744.790	38396011.564	9.03
J27	2514748.064	38396003.144	0.99
J28	2514749.051	38396003.269	3.64
J29	2514752.667	38396003.725	0.76
J30	2514753.423	38396003.821	7.57
J31	2514760.929	38396004.768	0.38
J32	2514761.304	38396004.815	5.56
J33	2514766.824	38396005.511	0.04
J34	2514766.857	38396005.494	0.15
J35	2514766.819	38396005.352	4.47
J36	2514766.962	38396000.881	17.05
J37	2514768.811	38395983.932	27.98
J38	2514771.847	38395956.113	39.48
J39	2514776.129	38395916.870	15.20
J40	2514777.778	38395901.757	0.63
J41	2514777.846	38395901.132	0.39
J42	2514777.884	38395900.744	10.80
J43	2514778.776	38395889.979	1.24
J44	2514778.827	38395888.730	1.29
J45	2514778.772	38395887.452	3.02
J46	2514778.513	38395884.447	0.01
J47	2514778.512	38395884.437	4.51
J48	2514778.125	38395879.941	3.13
J49	2514777.856	38395876.819	0.01
J50	2514777.855	38395876.809	0.92
J51	2514777.776	38395875.888	0.12
J52	2514777.765	38395875.769	2.42
J1	2514777.559	38395873.360	5.7555

界址点坐标表

点号	X	Y	边长
J40	2514777.778	38395901.757	0.63
J41	2514777.846	38395901.132	0.39
J42	2514777.884	38395900.744	10.80
J43	2514778.776	38395889.979	1.24
J44	2514778.827	38395888.730	1.29
J45	2514778.772	38395887.452	3.02
J46	2514778.513	38395884.447	0.01
J47	2514778.512	38395884.437	4.51
J48	2514778.125	38395879.941	3.13
J49	2514777.856	38395876.819	0.01
J50	2514777.855	38395876.809	0.92
J51	2514777.776	38395875.888	0.12
J52	2514777.765	38395875.769	2.42
J1	2514777.559	38395873.360	5.7555

S=3837.00平方米

鹤山市城乡测绘院有限公司

2024年07月数字化制图
2000国家大地坐标系: 中央子午线114度
1985国家高程基准, 等高距为1米
2007年版式

1:1000

绘图员: 张纯雯
检查员: 段群群
审核员: 谭群峰